

Personalisation

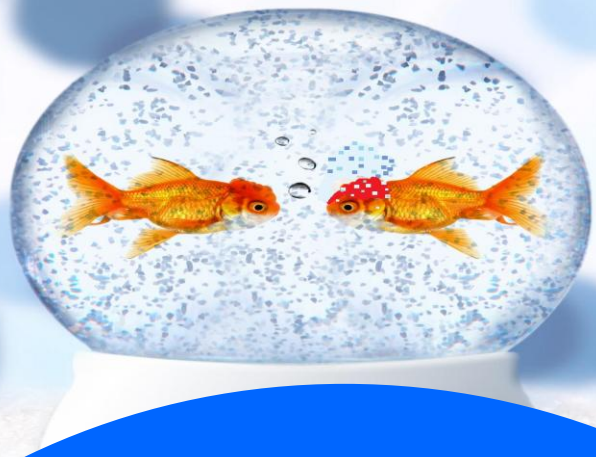
Course Aims

This module examines the background and context for personalisation. It outlines the different resource approaches, key drivers for change and how the whole systems approach is transforming adult social care.

Course Objectives

- ✓ Understand the background, context and legal framework for personalisation
- ✓ Identify the different resource approaches for personalisation
- ✓ Recognise the three key drivers for change and how the whole systems approach is transforming adult social care
- ✓ Identify the key characteristics and components of the self-directed support model and understand the framework for self-directed support
- ✓ Understand the basis for offering individual payments
- ✓ Recognise how to support choice and promote positive risk taking
- ✓ Describe the features and functions of support brokerage
- ✓ Understand how personal budgets are calculated and the payment mechanisms for a personal budget
- ✓ Know what services can be purchased, and who can be paid to provide support with a personal budget
- ✓ Recognise when a local authority can recover under spent or misused money from a personal budget
- ✓ Describe the importance of reviewing and monitoring personal budgets
- ✓ Recognise where liability for service support complaints is appropriate
- ✓ Understand the issues around capacity and consent
- ✓ Recognise the implications for safeguarding carers and service users
- ✓ Understand the duty of care for practitioners and local authorities
- ✓ Recognise the importance of information provision, the responsibility of assessment, and resource allocation
- ✓ Recognise through a case study how a personal budget and personalisation might be allocated





Personalisation

The Putting People First concordat and the associated milestones are driving the transformation of Adult Social Care forward by extending choice and control to individuals requiring social care support that is personalised and tailored to their unique requirements. In addition to the principles that lie behind personalisation this module adopts a more practice based approach enabling practitioners to make the required adjustments to their operational practice that turns abstract theory into practical application. As with the rest of the social care subscription, this module has been designed to reflect the need to manage resources and focuses the practitioner on examining how the effective utilisation of universal services can mitigate eligible need and reduce costs within the support plan. It provides clarity around the determination of what the provision can be purchased through a personal budget based on the remit of Adult Social Care. This will assist practitioners to support individuals by distinguishing between presenting needs and wants within the current legislative framework and provide for only those needs that are eligible, as Belinda Schwehr (social care legal expert) notes 'That's because the rest of us actually pay for the services...! And the rest of us can't just have whatever we want...'

