

Eligibility

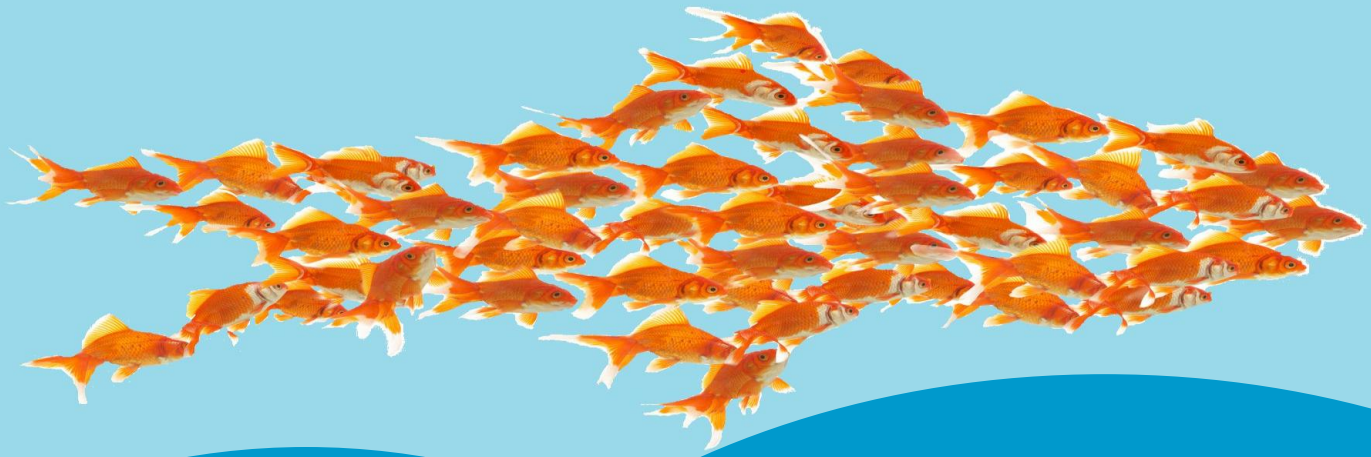
Course Aims

This module looks at eligibility for social care support and the legislative framework that supports eligibility and the need to identify risks to independence. The module considers how eligibility relates to equitable access and identifying possible causes for current unfair access to services. The relationship between eligibility as a financial control mechanism in social care is investigated. Finally the module explores the identification of people's needs and the need for practitioners to distinguish between needs and wants and the impact of self directed support on eligibility.

Course Objectives

- ✓ Explain what eligibility means in terms of assessment, and why it was introduced
- ✓ Understand the Fair Access to Services (FACS) eligibility framework and how criteria is applied
- ✓ Recognise the need to balance risk and independence when providing help
- ✓ Understand the relationship between eligibility and financial control, and eligibility and equity
- ✓ Identify the current reasons for unfair access to services
- ✓ Appreciate the complexity of defining needs and the necessity of using a non-hierarchical approach
- ✓ Understand the distinction between needs and wants
- ✓ Recognise the impact of self directed support and the implications of personal finance on eligibility





Eligibility

The eligibility criterion that councils operate as part of the Fair Access to Care Services (FACS) is a mechanism that councils can deploy to ensure equal access and management of their resources. In the advent of personalisation and personal budgets eligibility will be the only mechanism to control expenditure. The module highlights that misapplication of eligibility impacts on individuals by fostering premature dependency and the inappropriate financial impact on councils. In addition the module supports practitioners prepare for the implementation of the Equality Act in 2012 when robust and consistent application of eligibility will be necessary across the council to avert legal challenges.

This module will promote your practitioners to apply eligibility robustly and consistently. It endorses the necessary distinction between eligible needs and an eligible person and the related risk to independence if support was not made available. The module will establish for practitioners that the council does not have a legal duty to meet **all** the public's presenting wants and needs, but only those assessed eligible for community care services.

